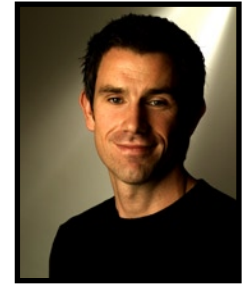
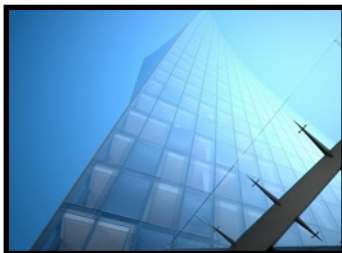


Name	<b>Niall Henry</b>		
Position	Architect Director		
Date of Birth	1972		
Nationality	Irish		
Qualifications	BArch (Hons)		1994
	Chartered Architect and member of RIAI		1997
	RIAI CPD - Designing for Safety - Role of Designer under Construction Regulations		2008
Career Summary	BCDH Architects	Director	2003
	Craig Henry Architects	Partner	1999 - 2003
	Brian O'Halloran Architects	Senior Architect	1999 - 2001
	BDP Dublin	Architect	1995 - 1999
	Derek Tynan Architects	Architect	1994 - 1995
	McGahon Architects	Architect	1993



**Vincam Close, Richmond, London, 2011** - One off sustainable house featuring cutting edge ecologically sound construction methods in a contentious back land site in the centre of London



**Waldron Road, Wandsworth, London, 2011** - A small development of 3 houses located within a back land site in a suburban area of London. The scheme is adopting best practice in terms of the Code for Sustainable Housing, Security by Design and Energy Efficiency



**Language School and associated accommodation, 2011** - BCDH are currently working with Capita UK to develop a design for an international language school to be located in the heart of Dublin



**Fabrication facility relocation study, 2010** - Study to evaluate 3 options for the relocation of a successful manufacturing business to a new location, including the review of existing and new build options, planning issues and road infrastructure

**House in Waterford, 2010** - Extensive refurbishment including sustainability measures and extension of an existing house in Waterford to maximise benefits befitting the house's orientation and views to the sea

**Proposed Speculative Office Building, Dublin 3, 2010** - A high quality design of around 1000 sqm is currently being developed for a speculative office building to be located within the vicinity of the new law courts. The proposal is for a 4 storey development of 900sqm of flexible office accommodation. Integrated into the design are a number of passive measures to minimise the environmental impact of the proposal.

**Rutland Street School, Dublin 1, 2010** - Feasibility study on the adaptive reuse of the existing 2,800sqm school to bring it up to modern standards for use as a crèche with associated community facilities

**Energy analysis projects, 2010** - Using the latest software for thermal analysis and solar gain, BCDH are involved in the improvement of the sustainability efficiency of both existing housing and maximising the benefits in new designs.

**One-off house, Wheatley Eyot, Middlesex, 2010** - One off house design on a picturesque site, bounded on 3 sides by the River Thames which balances the client's ambitions for cutting edge architecture with the sensitive site and the technical difficulties of building within a flood plain.

**East End Hotel, Portarlinton, 2010** - Major extension and the sensitive refurbishment of the existing protected structure to provide an additional 55 new bedrooms and a 900sqm function suite with all the associated facilities and restaurants.

**Sports Facility, County Wicklow, 2010** - Proposed facilities for Clanna Gael GFC to include: a full size GAA pitch, running track, all weather pitch, landscaping, a spectator stand and a club house with gymnasium and associated facilities.

**Motorway Service Station, Ardee, 2010** - A first of its kind motorway service station incorporating a 50 bedroom hotel, restaurants, fast food outlets and a mixed use retail building situated between Drogheda and Dundalk. A full range of services are to be provided for the long or short haul traveller.

**Laurence Town Centre, Drogheda, 2010** - The proposed phase 2 development of this shopping and cultural centre will integrate a substantial new development with the existing shopping centre to provide an additional 2000sqm of retail in addition to a 10 screen cinema carefully integrated within the urban block. The design of the proposed development integrates new retail space into



the historic town fabric, restoring life to a fragmented and underutilized brown field site and will assist in encouraging shoppers back to the town centre rather than the proliferation of out of town retailing.

**Mixed-use Development, Drogheda, 2010** - A back land development which sensitively stitches together a number of sites varying in size and depth with the historic fabric, to create a substantial new town centre development of 1800sqm and a new public route through the historic town core providing a series of new public spaces.

**LYCS Community Facility, Dublin 1, 2010** - The scheme provides a 1600sqm custom designed building that accommodates child care facilities for 60 children; after school and sessional services; youth programmes; adult education; long term training initiatives and community training centre facilities.

**Small housing development, Clontarf, Dublin, 2009** - Development of 3 no. 2 storey mews houses within a back land site within Clontarf, Dublin 3. The striking modern designs effectively utilise and create value out of an otherwise unused suburban garden.

**Small housing development, Baltray, 2009** - Development of 4 new houses on a sensitive site in Baltray, County Louth. The designs utilise traditional materials with modern detailing to complement the existing without pastiche.

**Mixed use development, Carrickmacross, 2009** - Development of a prototypical design for 36 apartment units to be located in the air rights over a proposed low cost retailer. The design used a central linear courtyard to achieve a dual aspect to all apartments.

**Green 19, Camden Street, Dublin 2, 2009** - Conversion and refurbishment of an existing mid terrace building to create a vibrant new cafe and office headquarters for Modern Green on the upper floors.

**Apartment Development, East Road, Dublin, 2009** - The proposed development of 50 apartments over retail and office accommodation on an infill brown field site in central Dublin. The design achieved dual aspect apartments providing quality levels of daylight penetration despite the constricted nature of site and proposed density.

**Mixed Use Development, Ardee Road Dundalk, 2009** - Mixed use development incorporating 250 apartments with retail and live work units incorporated into and adaptively reusing two protected structures.

**Apartment Development, Carrickmacross, 2009** - A mixed use retail/residential development with 36 apartments and live work units over a mixed use retail building.

**Apartment Development, East Wall Road, Dublin, 2009** - Proposed development of 75 apartments with ground floor live work units on a brown field site in central Dublin.

**One-off houses, Blackrock, County Louth, 2008** - Short listed for the Louth Architectural Awards, two one off houses have been created within the green belt surrounding Blackrock.

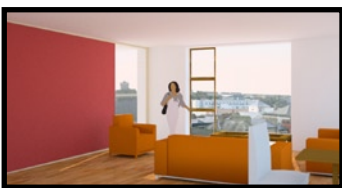
**House refurbishments County Louth, 2008** - Each short listed for the Louth Architectural Awards, these 3 separate house refurbishments and extensions have modernised the existing buildings in innovative ways in order to meet the owners' particular requirements.

**Donnybrook Mall redevelopment, Dublin 4, 2008** - BCDH have been requested by Mountbrook Homes Ltd to prepare a series of studies for the redevelopment of a prominent site in Donnybrook.

**Boland's Mills, Dublin 2, 2008** - The proposal for this strategically and historically important site focuses on opening the ground level of the site to encourage as much public access as possible to the new squares and plazas central to this development. The mixed use development included approximately 35,000 square meters of accommodation over 15 floors.

**Ringsend Community Centre, Dublin 4, 2008** - Proposal for a new custom designed community facility in Ringsend. The proposed development will include a large mixed use hall suitable for a wide variety of indoor sports, a large community crèche, youth training facilities and other associated community amenities in a state of the art development of approximately 3,000 square meters.

**Art Gallery and mixed use development, Derry, 2008** - Invited competition for the design of a new cultural centre opposite the guildhall in Derry City. Proposal to house a gallery as well as retail and commercial uses.





**The Gaels GFC Clubhouse & Community Facility, Dundalk, County Louth, 2008** - Following a lengthy process of feasibility studies to identify a suitable site, a modern design has been developed for new facilities comprising team changing rooms for up to 6 teams, bar, club rooms and function suites, upgrade to existing playing pitch and new all weather facility. Overall area of building 2,100 sqm.



**U2 Tower, Sir John Rogerson's Quay, Dublin 2, 2006** - Value €160M The winner of an international design competition organised by the DDDA, the twisting design was selected from over 600 entries. The design of this 130 metre tall tower was located prominently at the junction of the Rivers Liffey and Dodder and set unprecedented challenges in terms of an architectural response to the technical difficulties arising from its dynamic shape. The design is primarily for residential use and features the recording studios for the band U2.

**Mixed Use Development, Dun Laoghaire, 2004** - Conversion of protected structure, previously a bank into quality offices over three floors with the removal of an extension to the rear and replacement with new apartments and parking to the rear.

**Sheiling Hotel Redevelopment, Raheny, Dublin, 2003** - Architects on the refurbishment & extension of the existing protected structure to increase capacity by 30 bedrooms, the provision of a new function suite and associated restaurant facilities. This proposal also included a development of 34 new apartment units to rear of site.



**New Leisure Facility and Theatre, Drogheda, County Louth, 2003** - BCDH Architects were awarded second place in an invited competition for the provision of architectural services and design team leaders for a new facility for the Louth Meath FM.

**IDA Factory Unit, Carrick on Shannon, 2003** - Architects for a high-tech commercial unit in the IDA's Business Park in Carrick on Shannon.

**Reiss Flagship Store, St Stephens Green, Dublin, 2003** - Architects for new Irish flagship store for quality UK menswear retailer in the heart of Dublin's Grafton shopping area in conjunction with Reiss' in-house architects

**Housing Development, Bailieborough, 2002** - Architects for a development of 30 housing units on historically sensitive site. A system of house designs was developed to suit the steeply sloping site.

**New facilities for Dundalk Lawn Tennis Club, County Louth, 2002** - Dundalk LTC are considering a joint venture with Dundalk Institute of Technology to develop a shared centre for Tennis Excellence. The scheme will potentially house one of the largest indoor tennis facilities in Ireland with extensive outdoor provision.

**Masterplan and Hotel Development, Nevinstown, County Dublin, 2001** - Master planning proposals for new commercial/ hi-tech business park in North Dublin with a new 150 bedroom hotel proposal.

**IDA Factory Unit, Carrick on Shannon, Project Architect** on a high-tech commercial unit in the business park in Carrick on Shannon.

**DCU New Sports Pavilion & Playing Fields, Project Architect** for a pavilion for Dublin City University with changing room, bar facilities and a function hall with associated football and Gaelic football pitches.

**Masterplan 2020, University of Limerick, Review** of the 20 year Masterplan for the University of Limerick, which is currently being developed in an expansion to the North bank of the Shannon.

**Cinema Complex & Mixed Use Development, Cork, Architect** for the competition winning scheme for a large multipurpose development on the River Lee, which has won numerous awards, including a local RIAI Award.